



Manufactured & Marketed By:  
Home Makers

Email: [rpsshekar@gmail.com](mailto:rpsshekar@gmail.com)

Website: [www.homemakers.co.in](http://www.homemakers.co.in)

Customer Care Number: 080 - 41411230

Mobile : +91 98807 08008



**Homemakers**  
THE FURNISHING STORE

*Quality & Service at its core*



explore the

**ROYAL COMFORT**



**HOTEL COLLECTION**

[www.homemakers.co.in](http://www.homemakers.co.in)



**Homemakers**  
THE FURNISHING STORE  
HOTEL LINEN COLLECTION



Home Makers

Email: [rpsshekar@gmail.com](mailto:rpsshekar@gmail.com)  
Website: [www.homemakers.co.in](http://www.homemakers.co.in)  
Customer Care Number: 080 - 41411230  
Mobile : +91 98807 08008



# HOMEMAKERS



## COMPANY OVERVIEW

At Homemaker, we take pride in our position as a leading Manufacturer, Supplier, and Exporter in the realm of premium hospitality products. Our commitment to excellence shines through an extensive range that includes Bath Linen, Hotel Pillows, Pillow Covers, Cloth Napkins, Mattress Protectors, Hotel Bed Runners, Hotel Bed Sheets, and much more.

What sets us apart is our unwavering dedication to quality. Our products are synonymous with premium quality, boasting impeccable craftsmanship, seamless finishes, and an array of captivating patterns. We believe that luxury should be accessible, which is why our products come at prices that make elegance affordable. Timely delivery is a cornerstone of our ethos. We understand the importance of reliability in the hospitality industry, and we stand by our promise to deliver our products promptly. This commitment has earned us an expansive and loyal clientele, cementing our position as a trusted name in the market.

At Homemaker, we don't just provide products; we create experiences. Elevate your establishment with our exquisite range, where every detail matters. Discover the Homemaker difference today."

This revised copy emphasizes the quality, affordability, and reliability of your products and services, aligning them with the expectations and needs of your target audience in the hospitality industry.

[www.homemakers.co.in](http://www.homemakers.co.in)





## HOTEL BED LINEN

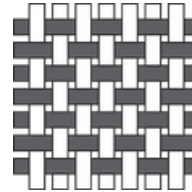
## CAREFULLY CHOSEN HIGH QUALITY YARN



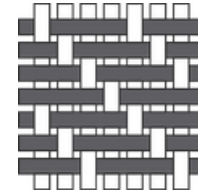
Good Cotton, Good Yarn, Good Fabric



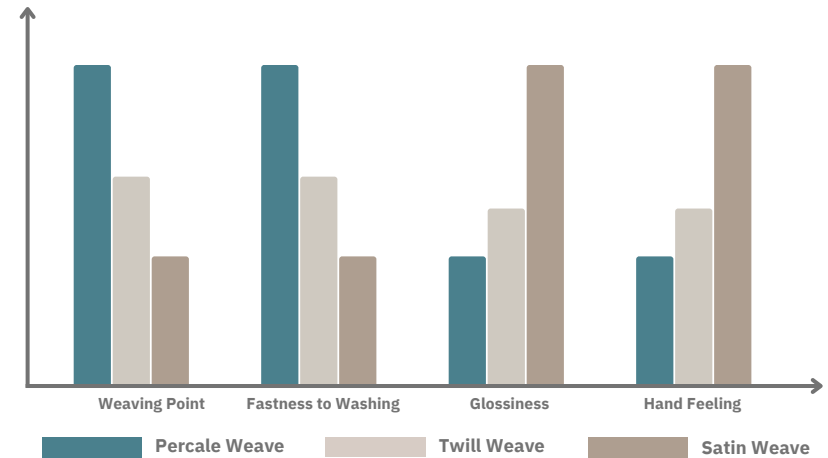
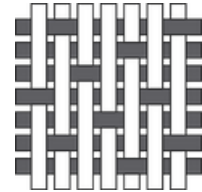
Percale Weave



Twill Weave



Satin Weave





## LONG STAPLE COTTON SATIN BEDDING SETS



Selected first grade long staple cotton of India

India has unique natural conditions, soil is alkaline, summer temperature difference is big, sunshine is sufficient, photosynthesis is sufficient, the growth time is long which creates high-quality cotton, with high fibre strength.

## WHAT IS SATIN FABRIC?

Satin fabric is referred to fabrics made through satin weaving, which has a complicated weaving technology. The warp and weft and interwoven at least once every three yarns, thus the satin weave makes the fabric denser and therefore thicker. Satin weave fabrics are very smooth and comfortable.

High Thread Count fabric from hand-picked cotton



Soft Touch



Silky Feel



### 1 CM STRIPE BEDDING SET

**Fabric:** 100% Cotton  
60% Cotton 40% Polyester 100%  
Microfibre

**Thread Count:** 220, 260, 300,  
400



### PLAIN BEDDING SET

**Fabric:** 100% Cotton

**Feel:** Soft, Skin-friendly, Elegant,  
Comfortable **Thread Count:** 220, 260, 300,  
400, 600, 1000



## BAMBOO BEDDING SET

Crafted from Premium Organic Bamboo Cotton by Sohum, our Bamboo Bedsheets is an all time best seller because of its superior luxury quality.



The bamboo fabric used in our bed linen is incredibly soft, smooth and luxurious and is available in all popular bed sizes.

The nature of the fabric gives our 300 thread count a feel comparable to that of 1,000-1,200 in other fabrics such as cotton. Its luxurious softness is retained wash after wash without using fabric softeners. It is made from recyclable and sustainable materials making it environmental friendly.



PRODUCED  
SUSTAINABLY

### SUSTAINABLE & ENVIRONMENTAL FRIENDLY

Bamboo can be a very sustainable crop: a fast-growing grass, it requires no fertiliser and self-regenerates from its own roots, so it doesn't need to be replanted.

### BAMBOO BEDDING SET



#### ANTIBACTERIAL

Bamboo is naturally antibacterial which helps to protect against skin irritation and allergies making it suitable for sleepers that suffer from sensitive skin or hay fever caused by dust mites.



#### CLIMATE CONTROL

Temperature regulating technology will keep the material cool in the summer and warm in the winter. This is all thanks to the highly breathable bamboo cover which keeps the air flowing.



#### SUSTAINABLE

Bamboo is a sustainable resource which is the world's fastest and densely populated crop. Bamboo uses 1/3 of water compared to other plants.





**Homemakers**  
THE FURNISHING STORE

# 239/26, 9th Main Road, 3rd Block, Jayanagar  
Next to UCO Bank Bangalore - 560011  
Email: [rpshekar@gmail.com](mailto:rpshekar@gmail.com)  
Website: [www.homemakers.co.in](http://www.homemakers.co.in)

☎ **080-41411230** | 📞 **+91 98807 08008**